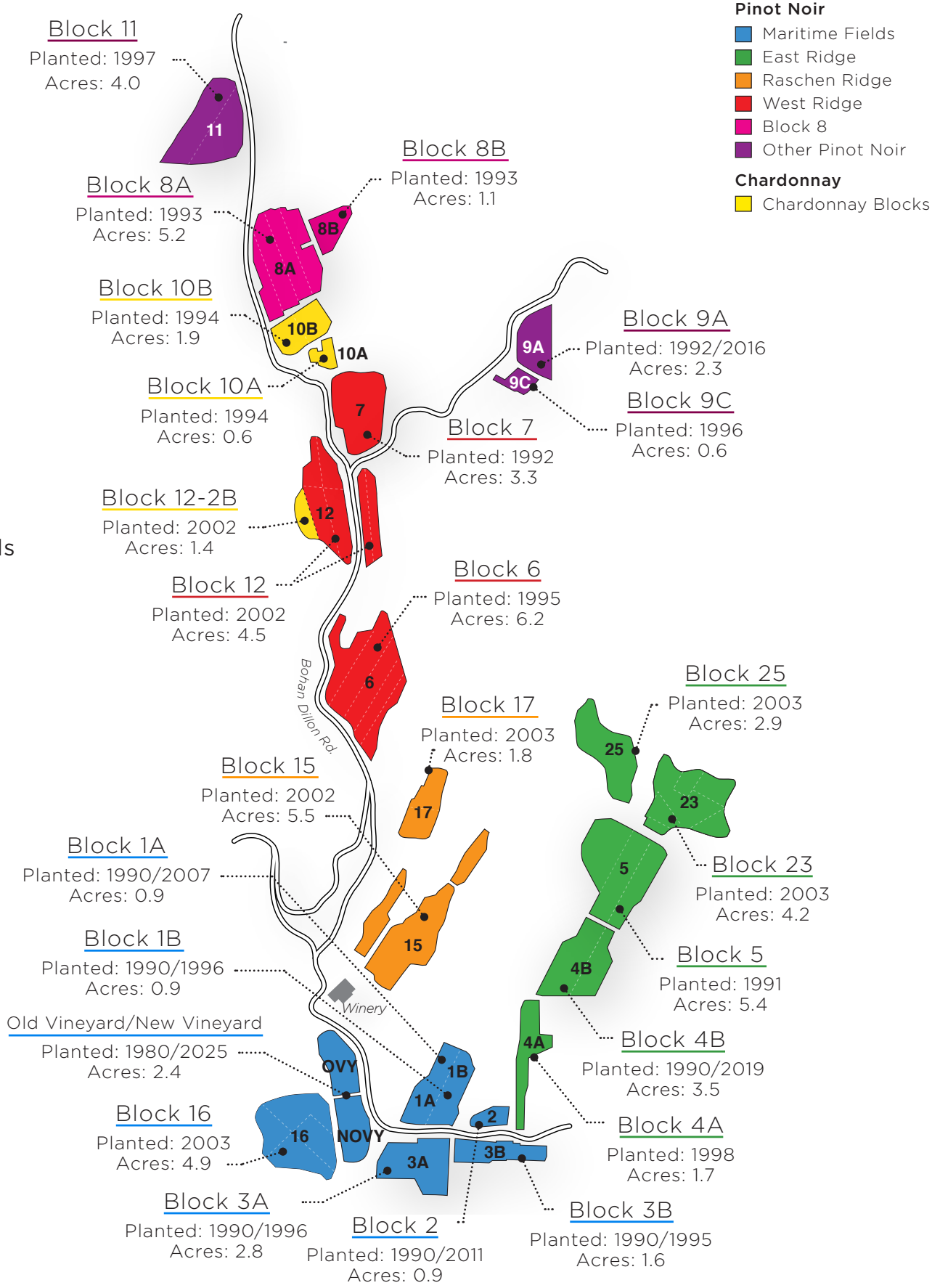
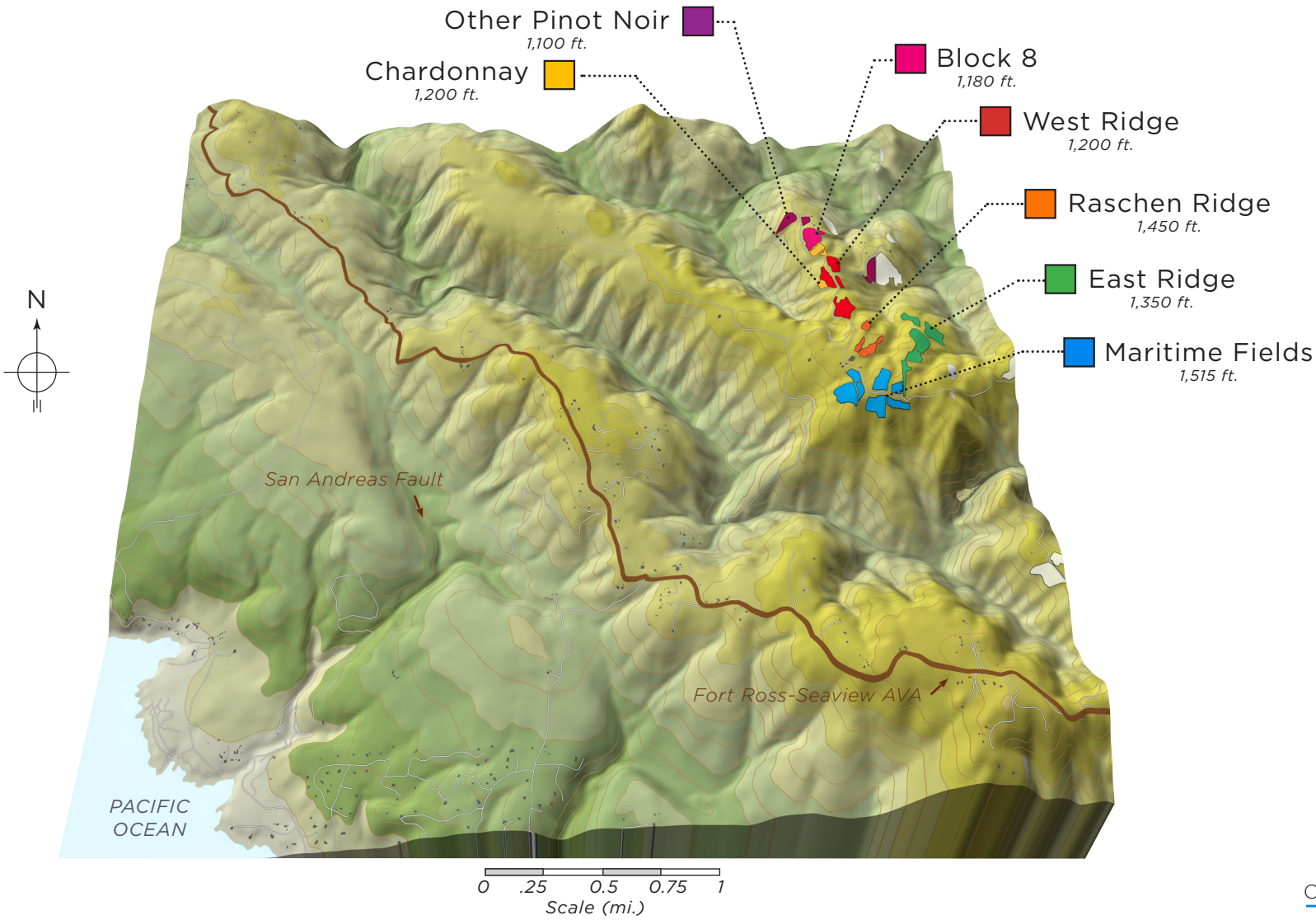


HIRSCH VINEYARDS

WEST SONOMA COAST AVA | FORT ROSS-SEAVIEW AVA





Founded by David Hirsch in 1980, the Hirsch Vineyard is one of the oldest plantings on the West Sonoma Coast.

Perched next to the Pacific Ocean and less than a mile from the San Andreas Fault, Hirsch has a dramatic, maritime climate, with an unusually diverse geology and topography. The result is a highly fragmented vineyard: 72 planted acres, divided into 67 individual farming blocks, planted to correspond to the sudden and impactful changes in soil, aspect and microclimate.

Out of this mélange Hirsch produces a range of estate Pinot Noirs, one estate Chardonnay and one estate Rosé. Biodynamic since 2011, Hirsch makes wines with a light hand and minimal intervention. Hirsch is cared for by David and his daughter Jasmine Hirsch, who since 2019 is also their winemaker.

hirschvineyards.com

HIRSCH VINEYARDS

WEST SONOMA COAST AVA | FORT ROSS-SEAVIEW AVA